



Kia Manawanui

Pānui #02 / 22nd February 2018

Te Rā Waldorf School, Te Rāwhiti Kindergarten, Nursery and Playgroups

89 Poplar Avenue

Raumati South

Phone: 04 299 0812 Mobile: 021 2958618

e-mail: office@tera.school.nz www.tera.school.nz

162 Wellington Road

Paekakariki

Phone: 04 292 7072

Kia ora koutou, dear Parents, Whānau, and Friends,

What a wild weather week it's been! We hope you all came through without any major disruption.

Nearly two weeks ago our whānau increased by one – congratulations to Tash, Nico and their tamariki who welcomed baby Aadya into the world.

Kindergarten and school have now settled back into their routines.

Please make sure that you attend parent evenings this term as it is here where the class community is formed, decisions about camps etc. are made, and you will hear about upcoming events and participate in their planning. It is also at the parent evenings where you will be able to deepen your understanding about developmental phases and the ways in which pedagogy and curriculum align with these, to support the tamariki to grow and thrive as they should.

We would like to take this opportunity to invite you all to this year's first **Wananga Hapori** on **27 March, 7.00 – 8:30pm**. The theme of this first hui will be the curriculum and how it aims to meet the developmental phases of the children, interwoven with specifics of Waldorf pedagogy and with a lens on fostering resilience. There will be space for questions, for sharing, and for discussing whānau involvement and contribution.

Noho ora mai,

Andrea Sorger

The **Diary of Dates** is now on the back page – ready to go on your fridge!

First Day Pōwhiri 2018



Hot Lunches 2018 – Starting again next week (from 28 Feb)

Hot lunches are on again each Wednesday from next week, \$3 for a baked potato, samosa, or nachos. Please pay and place your order at the office. Term payments of \$21 per child preferred for the 7 weeks of this term.

Te Rā Toymakers

Te Rā Toymakers:

Can you help us please? (The Fair is six weeks away).

The workshop is open 7-9pm on Thursdays.

*If you can't make that time or prefer another – please ring me to make an alternate arrangement.

*If you can work at home in your own time we have several projects and materials you could help with e.g.

- swords
- small blackboards
- cars, trucks and other wheeled toys
- dolls push chairs
- hobby horses etc...

Any other ideas? - Let's know. (We are not committed to toys only. Other wooden items also considered).

*Grandparents welcome to help too.

*Any wood turners out there?

* We are planning to open the workshop over two weekends
- 10/11 March

- 24/25 March

Please ring me you are able to come. Thank you.

From Paul Denford

Ph 027 246 3065 or 04 589 1652

Harvest Fair 2018 – 6 Weeks Away!

Raffle

We are trying to urgently source some new raffle prizes in time to allow us longer to sell them. Do you know somebody who knows somebody? Please let Susan van de Vorstenbosch 021 0222 6026 know if you do.

Auction Table

Thank you to those that have already said yes to giving a gift voucher or product towards our auction table. We'd love to make this table really hard to walk past. Do you make something or do you do something that could be added to this table. We are looking for things for everybody. Please contact Susan van de Vorstenbosch 021 0222 6026.

Raphael House Upper School

If you are interested in enrolling your child at Raphael House in the future, please do get in touch with the Office at Raphael House. Te Rā students are priority enrolments for Raphael House; however, enrolment is not an automatic process. It is important that students are registered on the Raphael House Waiting List. Please contact Katie Musk, Raphael House Outreach Coordinator should you have any questions –

enrol@raphaelhouse.school.nz or 04 569 5161.

Eurythmy Performance

**Public Performance
Little Theatre, Lower Hutt
7.30PM 4th March 2018**

**Door charges \$20 adults
\$15 (older) children**



**TE IKAROA
A Story of the Stars**

as well as music, poems & humour

performed by the

Aotearoa Eurythmy Ensemble

Come and celebrate Eurythmy!

Where do we come from? How do we get here?

On **Sunday 4th March** you may find out!

The Aotearoa Eurythmy Ensemble with members from Norway, Ireland, America, Holland, Italy, Germany, Australia and New Zealand have spent the last year investigating these ideas of loss, and discovery, destruction and creation.

In March the group will be touring the North island with "Kua Timata"- it is begun" a programme exploring the themes of journeys, finding a new place to be, a new place to call home through the music of Alexander Scriabin, the poetry of young New Zealanders and a Maori legend "Te Ikaroa - the story of the stars".

Tickets available at the door – see you there!

Recent Health Alerts from Regional Public Health

Whooping cough update on treatment and local cases

- Fifty five cases of whooping cough have been diagnosed in the greater Wellington region since 1st January this year. This is twice as many as the average monthly number of cases notified in 2017.
- There have been 21 cases in the Wellington region, 19 in the Hutt Valley and 15 in the Wairarapa.
- The age range is from babies < 6 months to adults in their 70's. There were three babies under 1 year of age; this is age group at highest risk of severe disease and complications.

(Insert from Te Rā - Please be alert and visit your doctor if you have whooping cough symptoms. We have been notified of two cases at our school recently; both have been appropriately treated.)

Cryptosporidiosis and Swimming Facilities

Regional Public Health has noted an increase in the number of gastro illnesses caused by the bug cryptosporidium. This has been especially for children using the Raumati splash pad around Wellington Anniversary weekend. The splash pad has closed for cleaning.

It usually takes 7 days (sometimes from 1 to 12) for symptoms to show after you have been infected. The symptoms are usually watery diarrhoea and stomach cramps and usually get better on their own in a few days. It is important to stay home and drink plenty of fluids while ill. If you are worried about the symptoms you can see your family doctor or call Healthline 0800 611 116.

People with crypto are still infectious after the diarrhoea stops. To stop other people getting sick, stay away from school or preschool until 48 hours with no diarrhoea. Good hand washing and drying is very important to stop the bug spreading to others.

It is also important not to use swimming pools (including splash pads) for two weeks after the diarrhoea has stopped. The bug can spread easily in pools.

More information about crypto and preventing spread in swimming pools is available at:

<http://www.rph.org.nz/publichealthtopics/recreationalwater/resources>

<http://www.rph.org.nz/public-health-topics/recreational-water/safe-swimming.pdf>



TE HORO SCHOOL

in association with HARC

2018 OPEN RIBBON DAY

TUESDAY 6TH MARCH 2018

Levin Showgrounds - Tiro Tiro Road Levin

JOIN US FOR A FUN DAY OF RIDING

Primary and secondary school riders welcome

Open to all ages, including lead rein

Flat and Jumping classes

See the full schedule at www.equestrianentries.co.nz

\$40 ENTRY includes both flat and jumping classes

Enter via www.equestrianentries.co.nz

Entries close: March 1st 2018

For queries please go to: www.facebook.com/TeHoroSchoolEquestrian
email Marcella: batespony@gmail.com or ph 021 471 481



Vacancies

Dunedin Rudolf Steiner School Handwork Teacher – part time fixed term

We seek a state registered teacher with skills and knowledge of the Steiner Handwork curriculum to teach years 2 – 8. The ideal applicant will have a commitment to Steiner pedagogy, and a flexibility to suit a smaller school. The position is fixed term due to its funding stream

and is currently for 8 hours per week, with the possibility of extended hours in other areas of the school. Start date negotiable, around Easter 2018.

Applications close 4.00 pm, Monday 26 February 2018.

An application form and job description is available by request from office@dunedinsteiner.nz Telephone: 03 471 2163

Community Notices and Advertising

These notices do not reflect the opinions of the editors.

Car For Sale

2006 Suzuki Aerio, 1800cc, 4-door sedan, automatic, white, 69000km, \$7,800ono, Ph. 021 223-4993

For sale

Cedar family home in Allen Rd, Raumati Beach.
100 m2, 3 bedrooms, 1 bathroom with bath & separate shower.
Wood burner. Sunny & private. Deck from lounge. Small, low maintenance section. Close to beach, shops and Kapiti College.
Private sale. 450 K. For more info. Contact Åsa 029 1288112

Open Floor Class in Kapiti with kaiakindness

Open Floor is a lively movement mediation practice which strives to take us into embodiment of our selves. Using movement, creativity, music, dance and inquiry.

There are no set dance moves on this dance floor.

One of the main points is to turn up and listen to your body giving yourself time and space to explore, whatever needs to move.

Thursday Morning 930-1130am

The Scout Den

Campbell park, Wellington Road, Paekakariki.

Tuesday nights 7-9pm

The Raumati South Scout Den

45 Tiromoana Road (opposite Raumati South Kindergarten) Raumati South. Please bring your water bottle, wear clothes you can move in and an extra layer. These are regular weekly class to deepen your practice. We dance bare foot fyi...\$10 on the door. For more info on my monthly classes...

kaiakindness.wixsite.com/atawhai

kaiakindness@gmail.com

Raw Food Class

Sarah Parson from New Earth Café in Australia is going to be sharing her secrets to creating healthy, delicious, organic food. The class will

cover dips, mains, snacks and treats. Come and learn how to make and prepare food that loves you back and then enjoy the meal together at the end of the class. There are two classes, you can come for one or two days, **Thursday 8th of March and/or Friday the 9th of March 4-8pm**. Bookings essential as limited to 12 people
Location: Te Nikau Forest Retreat, 1B Tui Crescent, Waikanae
Cost: \$140 for one day \$240 for both days
Contact: Debra Rice 021 432 064

Childcare places available in home care with Te Rā family

I currently have my mellow 3yr old at home during school time and would love to have some other little ones join us. Porse approved.
Call Pamela 0210401888

Wanted

Does anyone have a Baby Monitor that they have finished with? If so please contact Liz on 021 168 9184.

Wanted

Bike in good condition wanted for a 4-5 year old boy. Please contact Rick at the Office.

Local Scout Group

At present the local Scout Group has spaces to take on new members. Scouting offers fun and friendship, challenge and everyday adventure to 15,000 girls and boys across New Zealand.

Kea – ages 5-8

Cubs – ages 8-11

Scouts – ages 11-14

If you would like to join or find out more please contact 0800SCOUTS or email LNI@scouts.org.nz or visit scouts.org.nz

Mindfulness and Movement Retreat

Natural Ease, a 1-day **mindfulness and movement retreat**, Saturday 7 April, 10am - 4.30pm, Lotus Yoga Centre, Paraparaumu.

Replenish your energy and vitality, and give your mind a rest from overthinking. In this retreat, mindfulness and Feldenkrais-based movement work complement each other to promote balance, vitality and wellbeing.

Cost: \$95

For more info: <http://www.theartofmindfulness.co.nz/retreats/> or contact Rachel on 021473012.

Denise Walker Dance Academy

Classes available in Raumati, Waikanae and Otaki

Ballet, Contemporary, Jazz and more

Email Denise.walker82@gmail.com or Ph 0274544073

Facebook: Denise Walker Dance Academy

Recycle Your Oral Care Products

Old toothbrushes, all packaging, toothpaste tubes etc can be recycled this term at our school. Please place them in the cardboard box in the shelter attached to the hall.

After School Arts Group

For 8 – 12 year olds at the Wellbeing Centre, Raumati Beach.

Shona McNeil, Centre Co-ordinator, Te Ara Korowai Inc

Ph 04 299 6981. Web www.tearakorowai.org.nz

Notice from Ngā Uruora

Come along on Sunday 25 February 9.45 - 12.00 to help us build rock piles as habitat for skinks and geckos. You will have a good chance of seeing the four species of lizards we have found on the escarpment so far: Northern grass skinks, copper skinks, brown skinks and Raukawa geckos.

The rocks are sharp so you will need gloves. If you have a wheelbarrow that would also be useful but not essential.

Meet on the track entrance by the SH1 Bridge at 9.45am.

Kunekune Piglets up for Adoption

7 piglets, 2 girls and 5 boys all need rehoming, about 6 weeks old.

Please phone Kate 020 41408738

Free to the right home

Bread making with Doris in Paekakariki on Saturday 3 March.

Join other ten enthusiastic bread bakers around our kitchen table and learn how to make four different styles of breads, the yeast

wholemeal loaf, the rye sourdough style, a gluten-free fermented

buckwheat bread, and the plaited Swiss Sunday bread called 'Zopf'!

See [https://www.eventbrite.com/e/bread-baking-with-doris-tickets-](https://www.eventbrite.com/e/bread-baking-with-doris-tickets-41410126804)

[41410126804](https://www.eventbrite.com/e/bread-baking-with-doris-tickets-41410126804) for all the details for registration. Doris Zuur, 027-

2811570 or doris.zuur@gmail.com

Air Scouts

Air Scouts take Scouting to the next level! We're Scouts, with

altitude! Active in Waikanae since October 2017 we are the only

active Air Scout troop in the Wellington Region, teaching girls and

boys school years 7 - 10 about traditional Scouting & bush-craft, but with meteorology, navigation, engineering, technology and yes - even flying. Every Thursday 18.30 - 20.30. For more information check out our website: www.waikanaescouts.com or contact Kitty Fitton on 0223074553 / kitty@misfitt.co.nz

Help us build a LEGO low carbon Kapiti

Free Saturday afternoon workshops in Feb and March.

Limited spaces, register now. Open to Lego fans ages 5 +

Lowcarbonkapiti.org.nz/letsbuildit



KAPITI MUSIC CENTRE
Charitable Trust

MUSIC LESSONS
ENROLLING NOW!
From \$6.00 per lesson



Keyboard, Flute, Violin, Guitar, Percussion, Drums, Trumpet, Clarinet, Cello, Ukulele,
Introduction to Music, Saxophone, Recorder and Glee Club (singing), Ensemble,
Improvisation Band

Contact the Manager

Phone 021 297 1413 Email: admin@kapitimusiccentre.org.nz

www.kapitimusiccentre.org.nz

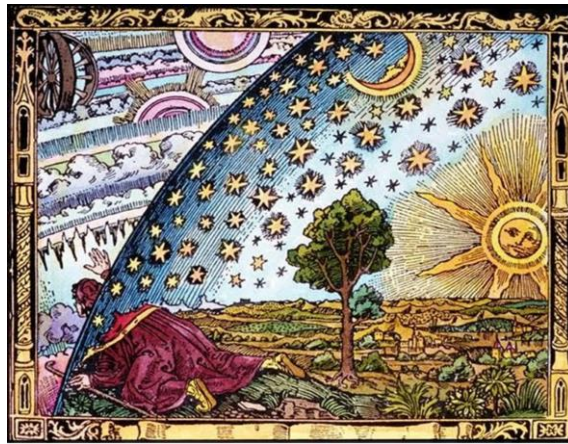
SPIRITUAL SCIENCE

Knowledge of Higher Worlds – Decoded

A weekend seminar with Ian Trousdell

24th – 25th March 2018

A detailed introduction to Rudolf Steiner's path of self-development enabling perception of non-physical dimensions for the purpose of knowing reality better



Detailed hand-outs clarify the whole book including all the exercises, combined with 'living thinking' practices, clarifying Rudolf Steiner's 'Path of Reverence' which forms the basis of Spiritual Science, a method for researching deeper aspects of reality than the physical.

Seminar: 9am - 5pm Sat. 24th / 9 – 4, Sun. 25th March 2018

Lecture: Saturday 25th March. 'Birth of the Higher Self.'

7.30 pm to 9 pm including question time

Anthroposophical Centre, Hastings
Corner of Nelson and Fitzroy Streets
\$150 fee. Registration or for more information
contact Ian: ian.trousdell@gmail.com

Raumati South Community Garden Party



MOA Community Orchard
Jeep Road Reserve, Raumati South

Saturday February 24th 2018

Walking, talking workshop:

Growing Fruit In Kāpiti - 3.30pm

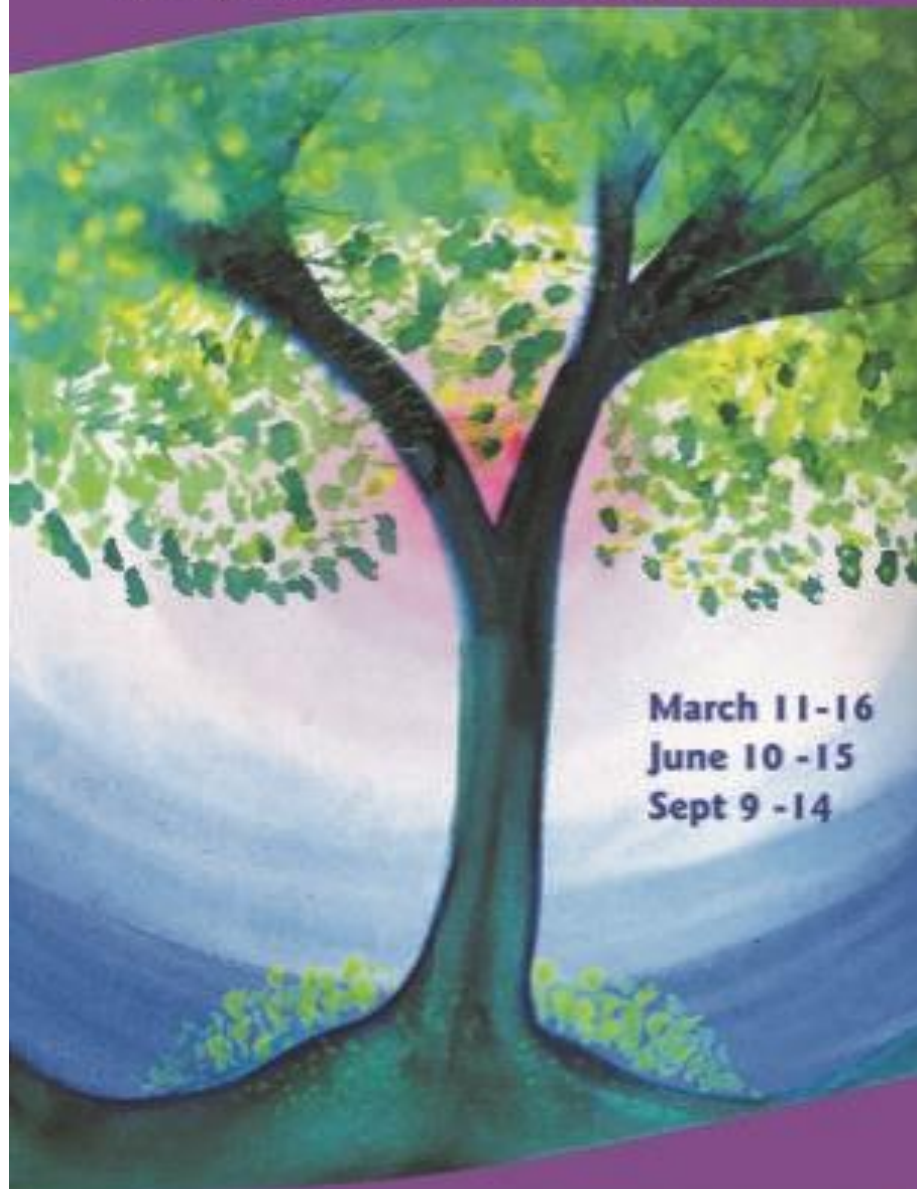
BYO picnic dinner - 5ish

Whanau-friendly concert - 6.30pm-10.30pm

Projections after dark

The Art of Well-Being 2018

Meet yourself, know yourself, be yourself



March 11-16

June 10 -15

Sept 9 -14

Grow your understanding of anthroposophical Special Character by becoming part of Taruna's 'Art of Well-Being' in 2018. Three week-long seminars explore themes of:

Well-Being Art Biography

Come to new meanings for yourself and use them as a source of power and grace in your own daily life at home and work. Feel nourished, enlivened and challenged through the daily learning opportunities that connect with your world of ideas, feelings and experience.



**TARUNA
COLLEGE**

For more information
See our website
www.taruna.ac.nz
or call 06 8777174

Diary of Dates

Thursday 22 nd February	Weekly Te Rā Toymakers 7:00-9:00pm
Friday 23 rd February	Weekly Parent Craft Group from 9am
Monday 26 th February	Information Afternoon 2:30pm
Tuesday 27 th February	Information Evening 7:00pm
Tuesday 27 th February	Lotti's Group Parent Evening 7:00pm
Wednesday 28th February	SCHOOL LUNCHES START TODAY
Wednesday 28 th February	Schools Sailing Regatta
Wednesday 28 th February	Class 7 Parent Evening 7:30-9:00pm
Sunday 4 th March	Public Eurythmy Performance in Lower Hutt Little Theatre 7:30pm
Monday 5 th March	Eurythmy Performance for School in Lower Hutt 10:30am Classes 1-5 12:45pm Classes 6 & 7
Tuesday 6 th March	Interschool Triathlon (<i>PPD Thurs 8 March</i>) Classes 6 & 7
Wed 14 th & Thurs 15 th March	Class 2 -6, Rippa Rugby fun sessions at school with visitor Ryan from HKRFU.
Wed 14 th & Thurs 15 th March	Class 7 Sailing
Tuesday 20 th March	Lotti's Kindy Parent Evening 7:00pm
Tuesday 20 th March	Weetbix Tryathlon – Class 6
Wednesday 21 st March	Nga Huru Festival Paekakariki Kindergarten Group
Saturday 24 th March	Community Working Bee - 2 Sessions 9:00am - 1:00pm, 12:00 - 4:00pm
Tuesday 27 th March	Wananga Hapori 7:00 – 8:30pm
Wednesday 28 th March	Classes 3-7 into Wellington NZ Symphony Orchestra Concert
Friday 30 th March	Good Friday – No School or Kindy
Monday 2 nd April	Easter Monday – No School or Kindy
Tuesday 3 rd April	Easter Tuesday - No School or Kindy
Saturday 7 th April	Harvest Fair Set-up Day
Sunday 8th April	Harvest Fair
Monday 9 th April	Teacher Development Day – No School or Kindergarten
Tuesday 10 th April	Interschool Mountain Biking –Classes 6 & 7 (<i>PPD Thur 12th April</i>)

Waldorf Education on the Kapiti Coast

- ❖ How can we help young people develop a lifelong enthusiasm for learning and work?
- ❖ How can the way in which children are educated foster a healthy self-awareness? How can education help them understand the
- ❖ needs of peoples of all cultures and the needs of the environment?

All prospective school and kindergarten parents
are also warmly invited to our

Information Afternoons 2:30pm

Monday 26 February, 2018
Monday 30 April, 2018

Information Evenings 7:00pm

Tuesday 27 February, 2018
Tuesday 1 May, 2018

at Te Rā Waldorf School, 89 Poplar Ave, Raumati South
There will be plenty of opportunity for questions.
You can also contact the office for an information pack.

Office ph. 04 299-0812 or email office@tera.school.nz
www.tera.school.nz